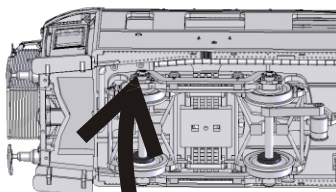
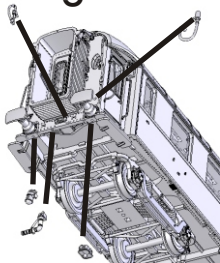


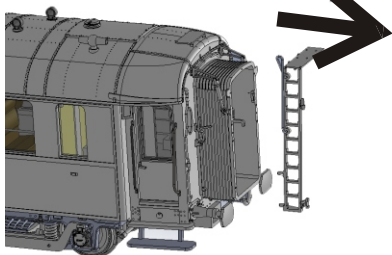
Montage détails d'extrémité / End details assembly



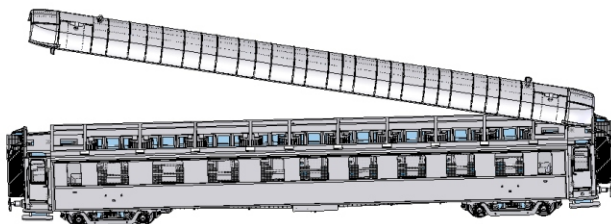
(R > 600mm)

Démontage toiture / Roof removing

1 Retirer l'échelle d'extrémité
(selon versions)
Remove end ladder (if fitted)

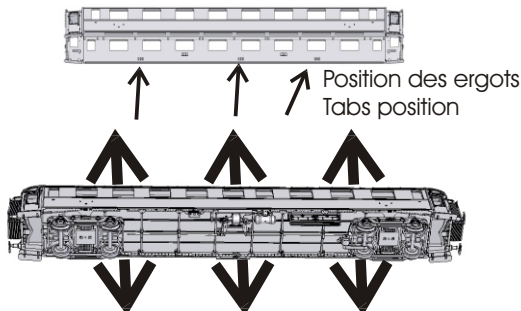


2 Soulever le toit
Unclip the roof

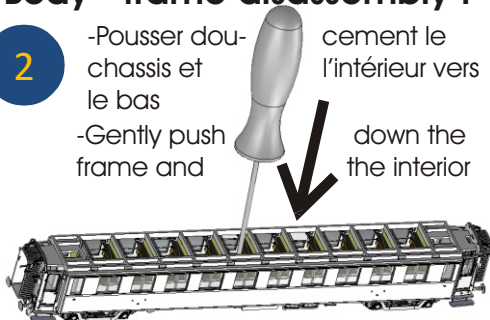


Démontage caisse-chassis / Body - frame disassembly :

1 - Dégager les 6 ergots latéraux
- Unclip 6 side tabs



2 - Pousser doucement le châssis et le bas
- Gently push frame and
cement le l'intérieur vers le bas
down the the interior



- au remontage, faites attention à bien positionner le grip central
- when reassembling, take care to the central grip